

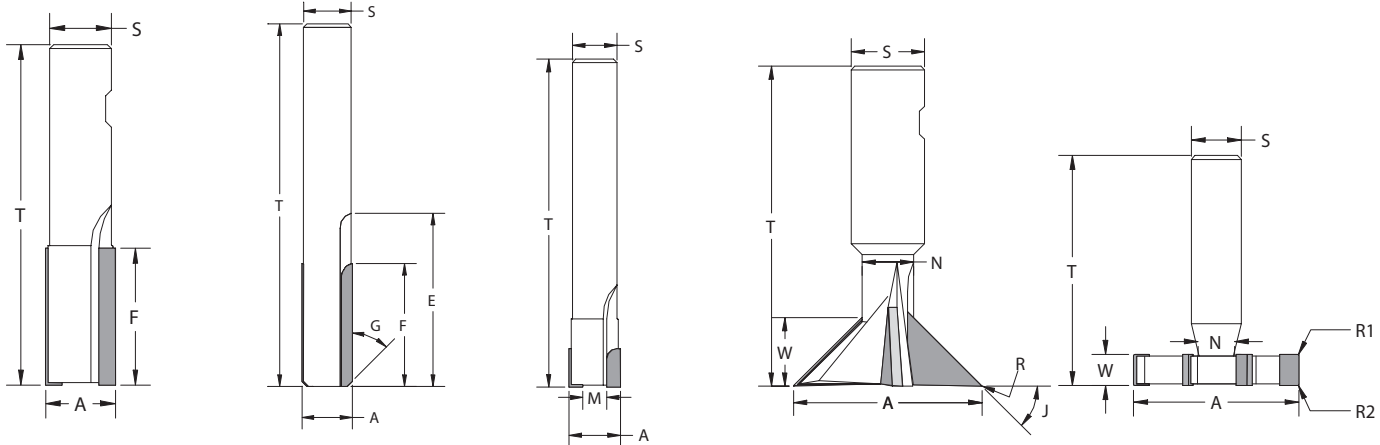


CARBIDE TIPPED SPECIALS QUOTE FORM

REQUIRED INFORMATION FOR QUOTING AND ORDERING
 FAX TO 573-221-1140 or E-MAIL TO sales@hannibalcarbide.com

TECHNICAL

CARBIDE TIPPED - SHANK TYPE TOOLS



END MILL

REAMER

COUNTERBORE

DOVETAIL

KEYSEAT

QUOTE REQUEST FORM:

INDIVIDUAL: _____

COMPANY: _____

CITY/STATE: _____

FAX #: _____ PHONE #: _____

QUANTITY BREAKS: _____ pcs _____ pcs _____ pcs _____ pcs

Chip class of MATERIAL BEING MACHINED (from page 6-8)

20 40 60 80 100 120 140 Other Material _____

BODY OF TOOL

T= _____ Overall Length S= _____ Shank Diameter A= _____ Major Diameter
 G= _____ ° Chamfer Angle

FLUTES

E= _____ Flute Length F= _____ Carbide Length
 Straight Flutes Number of Flutes _____
 Right Hand Cutting Right Hand Spiral _____ °
 Left Hand Cutting Left Hand Spiral _____ °

IF PILOTED

Cutting Pilot Head Diam. _____ Non-Cutting Pilot Head Length _____
 M= Min. Cutting Diam. _____

IF STEP REAMER

Cutting Step Non-Cutting Step
 (Also see pages 95-97) Minor Diam. _____ Step Length _____ Step Angle _____ °

IF KEYSEAT

W= _____ Width Straight Tooth R1= _____ Radius/Chamfer
 N= _____ Neck Diameter Staggered Tooth R2= _____ Radius/Chamfer

IF DOVETAIL

N= _____ Neck Diam. J= _____ ° Angle R= _____ Radius W= _____ Width

ADDITIONAL APPLICATION NOTES: _____

Special order tool quotes usually same day; always next. Over 96% of Special tool orders shipped on promise date.



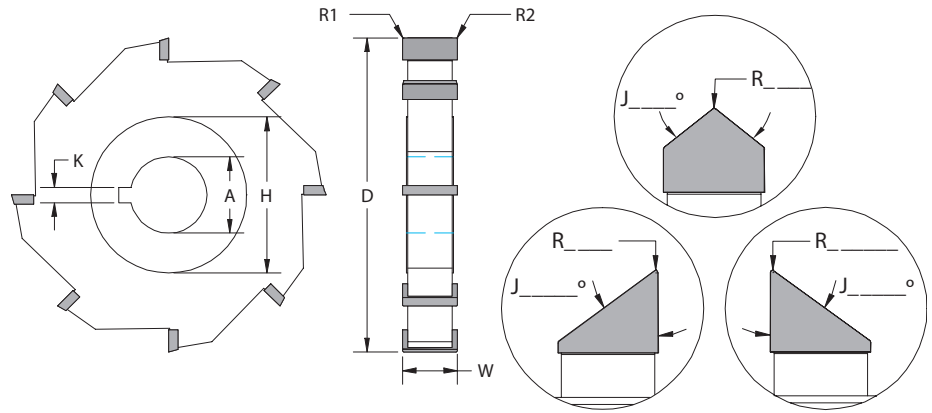
CARBIDE TIPPED SPECIALS QUOTE FORM

REQUIRED INFORMATION FOR QUOTING AND ORDERING
 FAX TO 573-221-1140 or E-MAIL TO sales@hannibalcabride.com

TECHNICAL

CARBIDE TIPPED - ARBOR TYPE TOOLS

- D= _____ Cutter Diameter
- W= _____ Cutter Width
- A= _____ Arbor Hole Diam.
- N= _____ # of Teeth
- H= _____ Hub Diameter
- K= _____ Keyway Size
- R1= _____ Radius/Chamfer
- R2= _____ Radius/Chamfer



- Straight Tooth
- Straight Stagger
- Herringbone Stagger

- MILLING CUTTER
- SLITTING SAW

- ANGLE CUTTER
(Fill in "J" & "R")

QUOTE REQUEST FORM:

INDIVIDUAL: _____

COMPANY: _____

CITY/STATE: _____

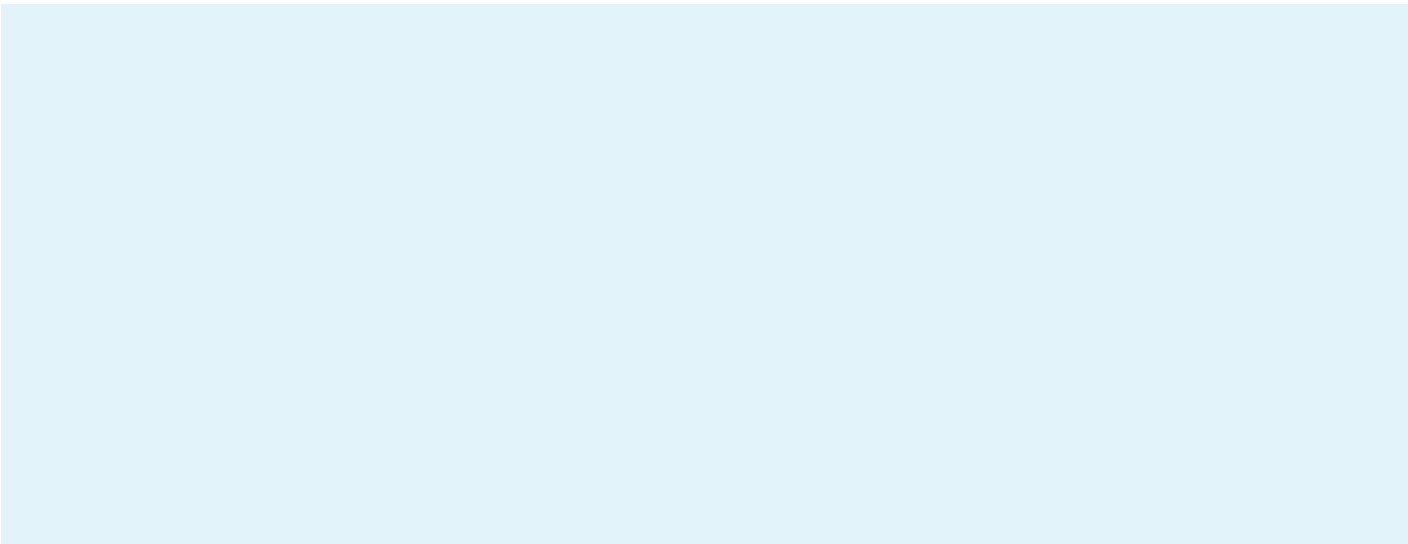
FAX #: _____ PHONE #: _____

QUANTITY BREAKS: _____ pcs _____ pcs _____ pcs _____ pcs

Chip class of MATERIAL BEING MACHINED (from page 6-8)

- 20
- 40
- 60
- 80
- 100
- 120
- 140
- Other Material _____

Special order tool quotes usually same day; always next. Over 96% of Special tool orders shipped on promise date.





SOLID CARBIDE SPECIAL STEP DRILLS

REQUIRED INFORMATION FOR QUOTING AND ORDERING
FAX TO 573-221-1140 OR E-MAIL TO sales@hannibalcarbide.com

TECHNICAL

Custom made to print specs
 You supply the critical dimensions (or prints)
 Hannibal manufactures a high quality Solid Carbide
 Step-drill to your specs



QUOTE REQUEST FORM:

INDIVIDUAL: _____

COMPANY: _____

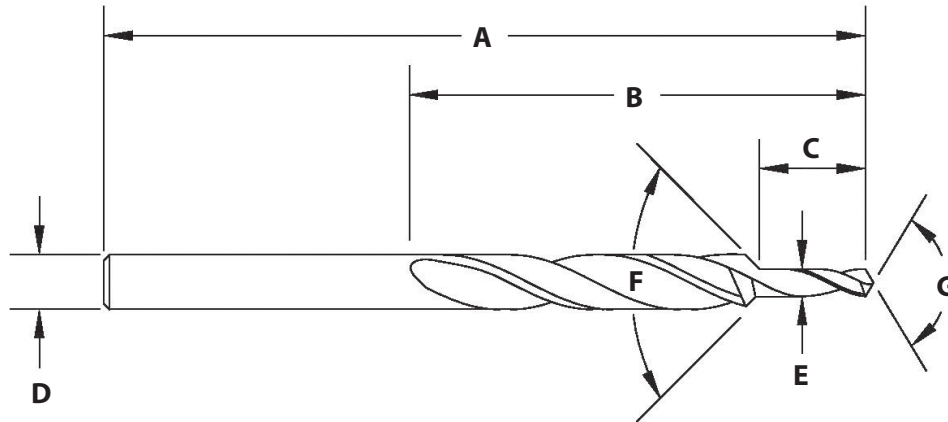
CITY/STATE: _____

FAX #: _____ PHONE #: _____

QUANTITY BREAKS: _____ pcs _____ pcs _____ pcs _____ pcs

Chip class of MATERIAL BEING MACHINED (from page 6-8)

20 40 60 80 100 120 140 Other Material _____



A = Overall Length _____ +/- _____

B = Flute Length _____ +/- _____

C = Step Length _____ +/- _____

D = Large Diameter _____ +/- _____

E = Small Diameter _____ +/- _____

F = Included Angle Large Diameter _____

G = Included Angle Small Diameter _____

135° Web Thin _____

118° Four Facet _____

Additional Application Notes: _____

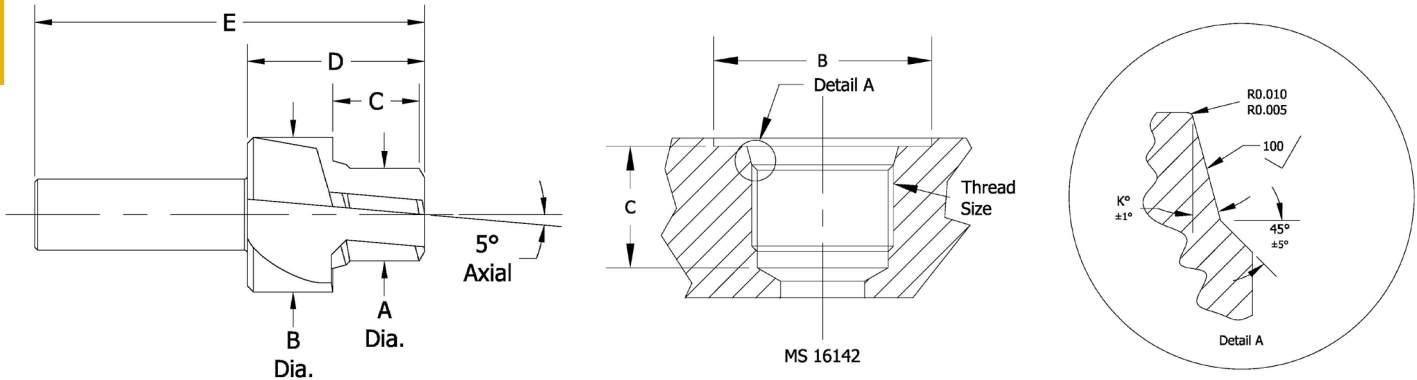
Special order tool quotes usually same day; always next. Over 96% of Special tool orders shipped on promise date.



SPECIAL PORT CONTOUR TOOLS CARBIDE TIPPED

REQUIRED INFORMATION FOR QUOTING AND ORDERING
FAX TO 573-221-1140 or E-MAIL TO sales@hannibalcarbide.com

TECHNICAL



A=Reamer Dia. B=Spotface Dia. C=Reamer Length D=Head Length E=OAL K=Sealing Seat Angle

QUOTE REQUEST FORM:

INDIVIDUAL: _____

COMPANY: _____

CITY/STATE: _____

FAX #: _____ **PHONE #:** _____

QUANTITY BREAKS: _____ pcs _____ pcs _____ pcs _____ pcs

Chip class of MATERIAL BEING MACHINED (from page 6-8)

- 20 40 60 80 100 120 140 Other Material _____

TYPE OF TOOL:

- A.N.D. 10050 Integral Reamer Pilot Series
- ISO 6149-1 Metric Port without I.D. Groove
- Metric Port Reamer Pilot Series
- MS33649 Integral Reamer Pilot Series
- S.A.E. Ports - MS16142 - J514F - J1926

SHANK STYLE _____

SHANK LENGTH _____

THREAD SIZE _____

COOLANT FED YES or NO

A = _____ REAMER DIAMETER

D = _____ HEAD LENGTH

B = _____ SPOTFACE DIAMETER

E = _____ OVERALL LENGTH

C = _____ REAMER LENGTH

K = _____ SEALING SEAT ANGLE

ADDITIONAL APPLICATION NOTES: _____

Special order tool quotes usually same day; always next. Over 96% of Special tool orders shipped on promise date.